



# FIRE & VEGETATION MANAGEMENT



Information Bulletin

Banff National Park of Canada

No. 5 April 2008

## *This Issue:*

### 2008 Prescribed Fires

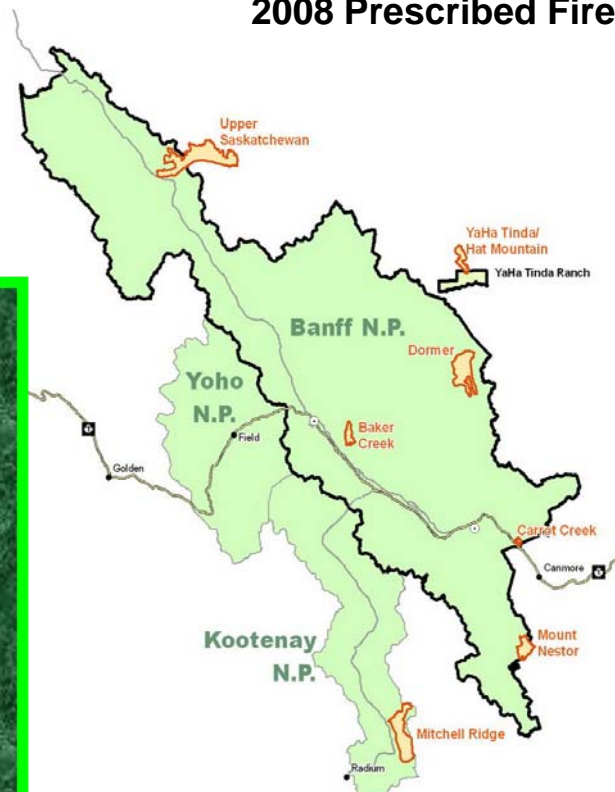
- Baker Creek
- Carrot Creek
- Dormer Valley II
- Mt. Nestor
- Upper Saskatchewan
- YaHa Tinda / Hat Mtn.



## Prescribed Fires

Fire managers are using prescribed fire to reverse the effects of decades of fire suppression on fire-dependent ecosystems in Banff National Park. This year there are six locations targeted for prescribed fire. Only one location is new for 2008. The other five locations have all been previously burned, but have not been completed due to unfavourable weather conditions in 2007. All will reintroduce fire which serves to promote healthy and productive forest and grassland ecosystems in the park. Several prescribed fires will also work to reduce the risk of wildfire and mountain pine beetle colonization to adjacent private and provincial lands. Area closures will be applied to prescribed fire areas until safe to re-open to the public.

## 2008 Prescribed Fires



### BANFF FIRE INFORMATION SOURCES:

Banff National Park Fire Program:

[www.pc.gc.ca/banff-fire](http://www.pc.gc.ca/banff-fire)

Fire Information Officers:

Banff: 403-762-1447

Lake Louise: 250-347-6174

Travel Advisory Updates:

[http://www.pc.gc.ca/apps/scond/Rec\\_Rep\\_e.a.sp?opark=100092](http://www.pc.gc.ca/apps/scond/Rec_Rep_e.a.sp?opark=100092)

Banff Information Center: 403-762-1550

Lake Louise Info Center: 403-522-3833



Parks Canada  
Parcs Canada

Canada



## SPRING PRESCRIBED FIRES

### Carrot Creek Prescribed Fire

The purpose of this 200 ha prescribed fire is to maintain the existing Carrot Creek fuel break east of Carrot Creek extending towards the Park eastern boundary, in close proximity to the Trans Canada Highway. It is scheduled for mid to late April, 2008.

This fire will reduce the threat of wildfire by burning existing surface fuels/slash piles. This will provide an additional benefit of wildfire protection for the Hamlet of Harvie Heights and the Town of Canmore. It will also serve to reduce mountain pine beetle populations along the Bow Valley corridor and help to maintain optimum montane wildlife habitat through maintaining biodiversity of forest vegetation species. For more information contact Ray Schmidt, Fire Communications Officer, Banff National Park at (403) 762-1447.

#### WHY?

*Prescribed fire is an important tool in maintaining the diversity of fire-dependent species in Banff National Park. This spring, BNP fire managers will conduct these prescribed fires to improve wildlife habitat, reduce the susceptibility of forest stands to the attack and spread of mountain pine beetle, and create fire breaks to reduce the threat of wildfire to local communities and surrounding areas.*



### Ya Ha Tinda / Hat Mountain

Between April and June, 2008, Parks Canada will be working co-operatively with Alberta Sustainable Resource Development to carry out a prescribed fire on the slopes of Hat Mountain adjacent to the Ya Ha Tinda Ranch within the front ranges of the Rocky Mountains.

The goal is to develop a fireguard and reduce the threat of mountain pine beetle influx. About 150 ha of guard burning has taken place already in this 1200 hectare unit.

For more information contact Maria Sharpe, Fire Communications Officer, Alberta Sustainable Resource Development at (403) 845-8278.



## FALL PRESCRIBED FIRES

### Dormer Prescribed Fire

The Dormer area, about 45 km north of the Banff townsite and adjacent to the east park boundary, is scheduled once again for continuing burn treatment this year to improve wildlife habitat and to reduce mountain pine beetle populations and susceptibility. About 550 hectares of this approximately 4000 hectare unit is now burned. This prescribed fire is scheduled to commence in spring with work on the east guard followed by work on the remainder area as weather conditions permit.

For more information contact Ray Schmidt, Fire Communications Officer, Banff National Park at (403) 762-1447.



### Baker Creek Prescribed Fire

This 800 ha prescribed fire is, once again, planned this fall for the Baker Creek Valley, two km east of highway 1A. In 2007, due to unfavourable weather conditions, only 12 ha of the fireguard was burned.

This project will serve to assist with restoration of grizzly bear habitat in upper Baker Creek, reduce mountain pine beetle populations in the upper Bow Valley, enhance natural fire barriers in this area and help restore the historic fire cycle in Banff National Park.

It will also provide some great opportunities to see a prescribed fire in progress. Park interpreters, with spotting scopes and fire information, will be stationed at key viewpoints during peak burn periods.

For more information contact Marla Oliver at (250) 347-6174.





## **SPRING / FALL PRESCRIBED FIRES**

### **Upper Saskatchewan**

A 2550 ha prescribed fire is planned for the Saskatchewan Crossing area of Banff National Park this season. This project is part of a larger prescribed fire being planned jointly with the province of Alberta. The total project targets 7900 ha of forest along the north side of Highway 11 from the Icefields Parkway to the western edge of Kootenay Plains Ecological Reserve.

Burning will help maintain and restore fire as an ecological process in this fire-adapted ecosystem. It will also reduce the potential threat of large wildfire in the area, and help limit the spread of mountain pine beetle into new habitat in Alberta.

For more information contact: Maria Sharpe, Fire Communications Officer, Alberta Sustainable Resource Development at (403) 845-8278 or Marla Oliver, Fire Communications Officer, Parks Canada at (250) 347-6174.

### **Mt. Nestor Prescribed Fire**

Parks Canada will be working cooperatively with the province of Alberta to carry out this approximately 2000 hectare prescribed fire. It will continue to take place between spring and fall 2008 in an area on the boundary between Banff National Park and Spray Valley Provincial Park in Kananaskis Country.

The prescribed fire is planned to cover a 7-kilometre area along the south and southwest facing slopes where Mount Nestor meets the Spray Reservoir in Spray Valley Provincial Park. Sixty percent will be burned inside Banff National Park, with the remainder on provincial lands. Only 50 ha was burned in 2007 due to poor weather.

For more information contact Steve Donelon, Heritage Protection Team Leader, Alberta Tourism, Parks, Recreation, and Culture at (403) 678-5500, ext. 282. Website information:

[http://www.cd.gov.ab.ca/enjoying\\_alberta/parks/featured/kananaskis/Mount\\_Nestor.asp](http://www.cd.gov.ab.ca/enjoying_alberta/parks/featured/kananaskis/Mount_Nestor.asp)

#### **“HEY... WHERE’S THIS SMOKE COMING FROM?...”**

Smoke can appear from a fire a long distance away in certain weather conditions. It is common in southern Alberta to be affected by smoke originating from fires in southern British Columbia or even from Washington, Idaho and Montana, USA.

Please use the following websites to assist you with finding your answer:

**Daily Hotspots:** [http://cwfis.cfs.nrcan.gc.ca/en/current/cc\\_m32\\_e.php](http://cwfis.cfs.nrcan.gc.ca/en/current/cc_m32_e.php)

**Who's on fire?**

<http://activefiremaps.fs.fed.us/canada/activefiremaps.php?op=maps&rCode=alx>

**Where's the smoke from?** <http://gp16.ssd.nesdis.noaa.gov/FIRE/fire.html>