



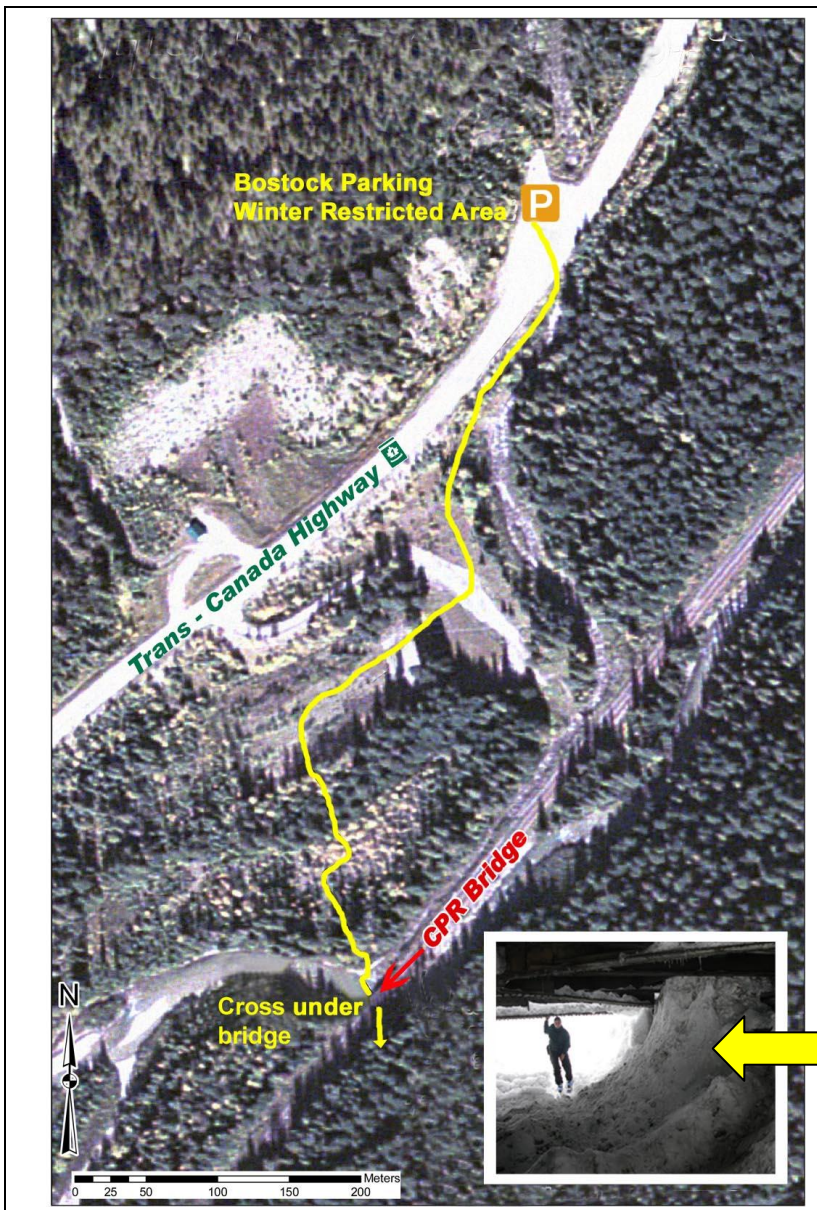
Flat Creek Unrestricted Winter Permit Area, Fortitude and Smart Winter Restricted Areas

Designated Access Route

A valid Winter Permit is required to enter a Winter Restricted Area

The CP bridge and tracks are Canadian Pacific property, do not trespass.

Note that no bridge is available for foot travel across the Illecillewaet River. At times a safe crossing may not be available. Please use caution and choose a safe route.



From the Bostock Parking Winter Restricted Area, carefully cross to the southeast side of the Trans Canada Highway (TCH). Travel southwest parallel to the highway (towards Revelstoke) for 25m until you see a tree with an orange marker. From that point, ski down the bank diagonally, aiming towards Fortitude ridge and the CP access road. Follow the orange markers to the CP access road (about 150m). Cross the unplowed access road and travel in a southwesterly direction, into a flat opening, just left of a large, marked hemlock tree. From there, parallel the TCH and follow the markers for about 250m towards the end of the open meadow. Before the end of the open meadow, trend south (left), following the markers towards the thicker forest. There is a marked trail through the trees that has been cleared. Stay on this, until you get to the train bridge at the Bostock Creek and Illecillewaet River confluence.

Cross under the tracks by walking or skiing **under** the CP train bridge. **Do not trespass on the bridge.** If available find a safe snow or ice bridge to cross the Illecillewaet River. At times a safe crossing may not be available. **Please use caution and choose a safe route.**