



parkscanada.gc.ca

# Feasibility Assessment of the Potential for National Park Reserve Lands on Bowen Island



Parks  
Canada

Parcs  
Canada

Canada

# Outline for this Evening:

- Ø Introduction to Parks Canada
- Ø Why Bowen Island?
- Ø The Feasibility Assessment
- Ø Concerns and Opportunities
- Ø Questions and Answers





An aerial photograph of a coastal landscape. In the foreground, a dark blue body of water, likely a fjord or a large bay, is visible. The water is surrounded by steep, forested hills covered in dense green trees. In the middle ground, a small, rocky peninsula or island is visible, with a few small structures or buildings. The background shows a vast expanse of water leading to distant, hazy mountains under a clear blue sky. The overall scene is serene and natural.

# Introduction to Parks Canada

Portland Island, Gulf Islands National Park Reserve

# Who is Parks Canada?

The Parks Canada Agency is responsible for national parks, national historic sites and national marine conservation areas

- Ø 42 national parks
- Ø Over 301,000 km<sup>2</sup>
- Ø 22 million visitors per year
- Ø Has 5,500 employees
- Ø Supports over 31,000 jobs
- Ø 95% satisfaction level



Winter Cove, Saturna Island  
Gulf Islands National Park Reserve



# What is Parks Canada's Mandate?

*“On behalf of the people of Canada, we protect and present nationally significant examples of Canada's natural and cultural heritage, and foster public understanding, appreciation and enjoyment in ways that ensure their ecological and commemorative integrity for present and future generations.”*



# Parks Canada's Vision

*“Canada’s treasured natural and historic places will be a living legacy, connecting hearts and minds to a stronger, deeper understanding of the very essence of Canada.”*



Beaumont, South Pender Island  
Gulf Islands National Park Reserve



[parks canada.gc.ca](http://parks canada.gc.ca)

Bringing you Canada's natural and historic treasures



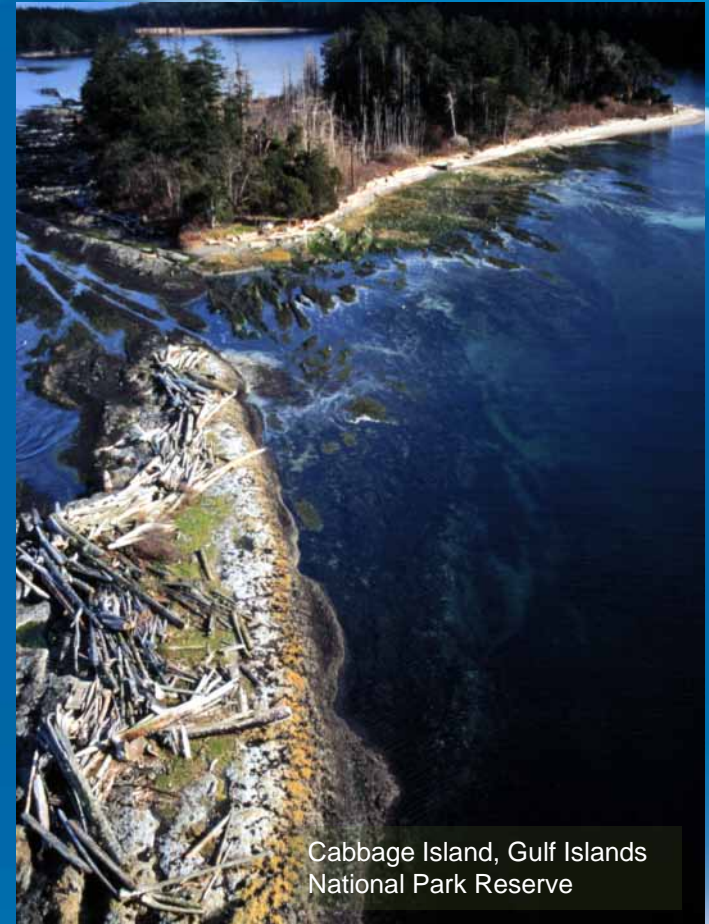
# Canada's National Parks

## SYSTEM PLAN



# What is a National Park Reserve?

- Ø A national park *reserve* refers to lands which are subject to Aboriginal claims that have been accepted for negotiation by the federal government.
- Ø Traditional renewable resource harvesting activities by Aboriginal persons are permitted.



Cabbage Island, Gulf Islands  
National Park Reserve





# Why Bowen Island?



# Why Bowen Island?

- Ø Close proximity to a large urban audience.
- Ø Better representation of the Strait of Georgia Lowlands natural region.
- Ø To pursue a greater level of protection for Bowen Island's natural and cultural values in collaboration with the Bowen Island Municipality.





# Parks Canada's Urban Engagement



- Ø Strategy to engage urban audiences in a national park experience.
- Ø A means to foster public support for national parks.
- Ø Will require creativity and innovation.



## Bowen Island in the Context of the Strait of Georgia Lowlands Natural Region and Gulf Islands National Park Reserve





# Gulf Islands National Park Reserve



- Ø 3,600 hectares of land.
- Ø 2,600 hectares of marine waters.
- Ø Occupies 15 different islands.
- Ø Representative of dry coastal Douglas fir ecosystem.
- Ø Complement of about 50 staff.



# Experience from Gulf Islands National Park Reserve



- Ø Visitation
- Ø Resource protection
- Ø Employment
- Ø Investment
- Ø Shared services
- Ø Collaboration





# Parks Canada/BIM Collaboration



- Ø Parks Canada is pleased to collaborate with BIM.
- Ø A national park reserve may assist Bowen Island in the implementation of the updated OCP.
- Ø Feasibility assessment results must meet both Parks Canada's and BIM's requirements and aspirations.



# The Feasibility Assessment





# What is a Feasibility Assessment?

## The Feasibility Assessment will consider:

- Ø Natural and cultural resources
- Ø Memorable visitor experiences
- Ø Bowen Island's aspirations
- Ø Costs and benefits
- Ø Community support
- Ø Aboriginal support.



# How Will the Process Unfold?

Technical Studies and Initial Consultations



Develop Vision and Cost-Benefit Analysis



Develop Preliminary Park Concept



Finalize and Evaluate Park Feasibility



Finalize Agreements



Recommendations to Government

2010

Aug.

Oct.

Nov.

2011

Jan.

March

April



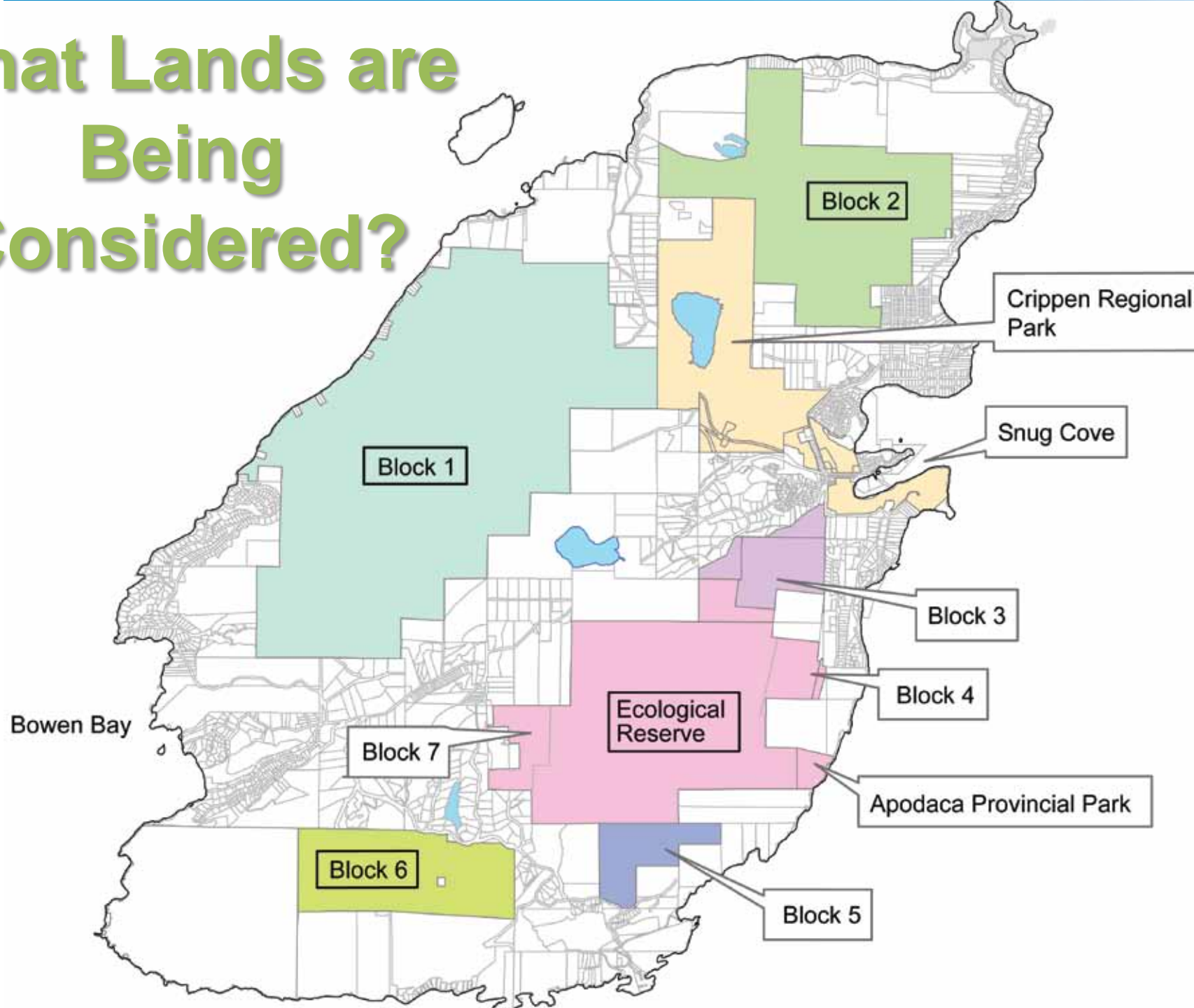


# Consultation with Aboriginal Groups

- Ø Parks Canada has a legal duty to consult with Aboriginal Groups.
- Ø Consultations will take place with the Squamish First Nation and the Hul'qumi'num Treaty Group.



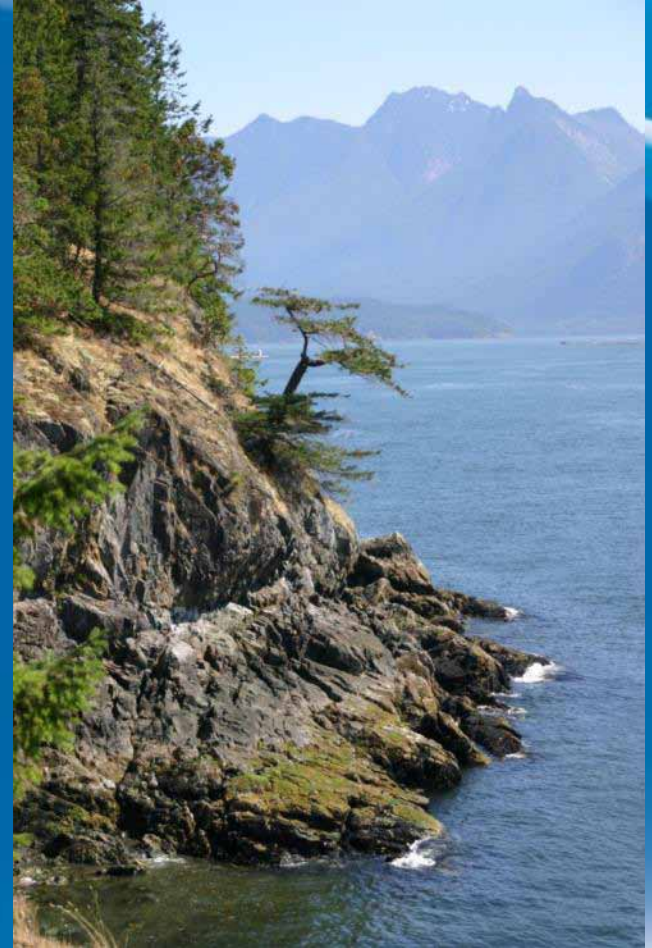
# What Lands are Being Considered?





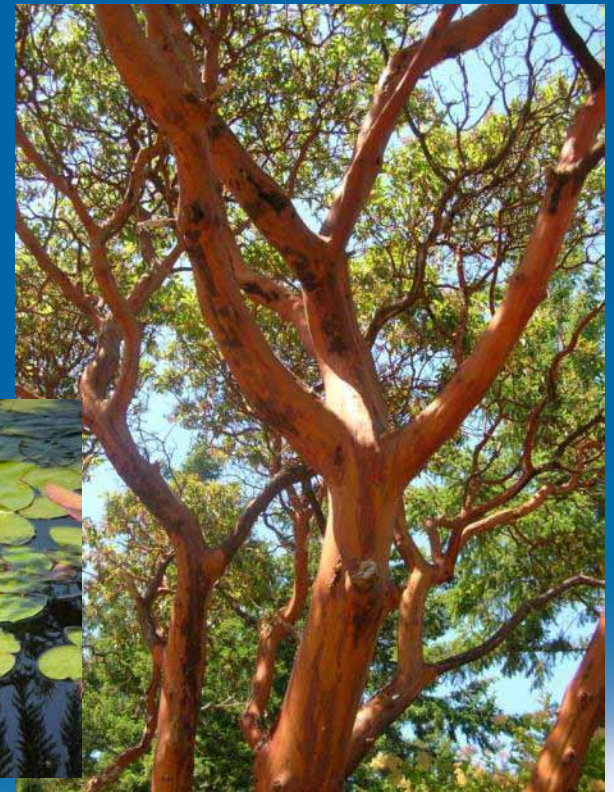
# Are Private Lands Being Considered?

- Ø Public lands only are being considered (approx. 2,100 ha.).
- Ø Not considering purchasing private lands at this time.
- Ø The potential role of private lands in complementing national park reserve lands will be considered.
- Ø The potential for some lands to be acquired through a third party or by donation will also be considered.



# Concerns and Opportunities

- Ø Visitation levels and implications for local infrastructure
- Ø Expropriation
- Ø Watershed protection
- Ø The marine environment
- Ø Visitor fees
- Ø Camping





# Visitation and Implications for Island Infrastructure

- Ø Ferry congestion, traffic in Horseshoe Bay and Snug Cove and on island roads, taxing the water and sewage systems and health and emergency services.
- Ø Estimate visitation levels and assess the potential impacts, costs and benefits of establishing national park reserve lands.
- Ø Results will be an integral part of the feasibility assessment.



# Would Parks Canada Expropriate Land?

## NO!

- Ø By law, the Government of Canada cannot expropriate private property in order to enlarge or establish a national park or national park reserve.
- Ø Private lands would only ever be purchased on a willing seller-willing buyer basis.





# The Marine Environment

- Ø The intertidal and near shore sub-tidal marine environments adjacent to lands of interest will be considered.
- Ø Could extend to 200-300 metres to enable the management of human activities and the protection of significant marine resources.



# Would There be Visitor Use Fees?

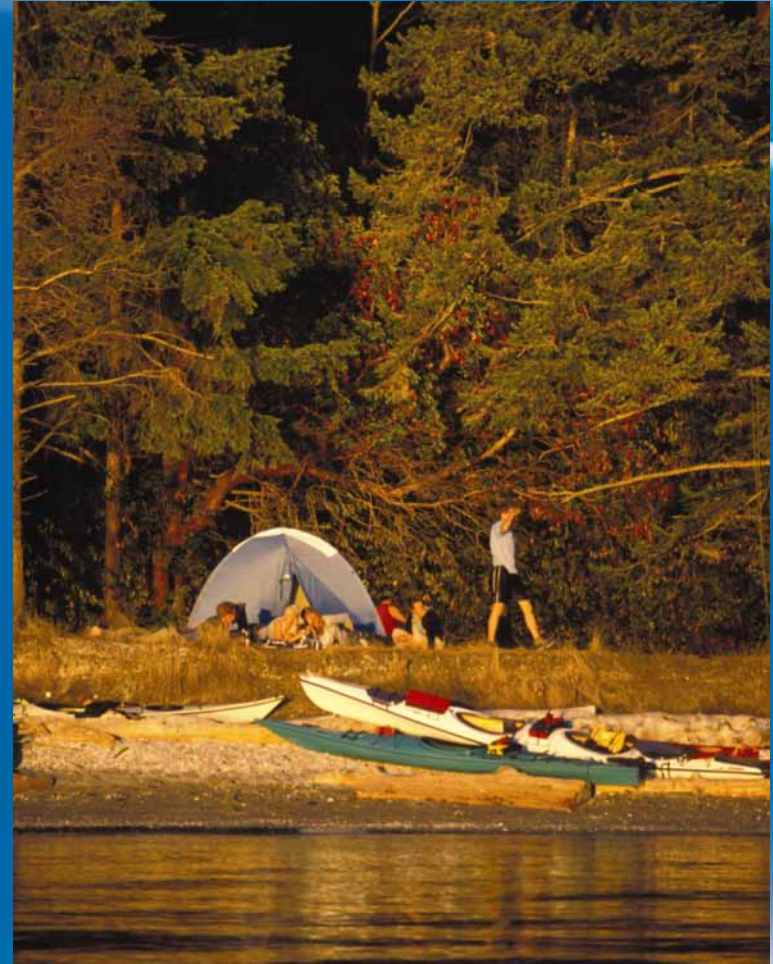
- Ø Entry and service fees normally apply in National Parks to help fund and support visitor facilities and services.
- Ø Fees vary from park to park.
- Ø Community consultations would help determine facilities and services to be provided and what fees may apply.
- Ø Ways to provide discounted rates for local communities.





# Would there be Camping?

- Ø Camping is an important part of the national park experience.
- Ø Gulf Islands offers various types of camping.
- Ø Camping can be managed through site location and design, quotas and reservation systems.
- Ø Other forms of overnight accommodation, such as yurts, are becoming more common.



# What About Watershed Protection?



- Ø BC Crown lands on Bowen Island are not protected; are potentially subject to mining, logging, lease and sale.
- Ø In a national park reserve, these activities would not be permitted.
- Ø The maintenance of water quality would be a primary consideration.
- Ø Existing water rights would be honoured; new applications subject to environmental assessment.





# What Are the Next Steps?

Technical Studies and Initial Consultations



Develop Vision and Cost-Benefit Analysis



Develop Preliminary Park Concept



Finalize and Evaluate Park Feasibility



Finalize Agreements



Recommendations to Government

2010

Aug.

Oct.

Nov.

2011

Jan.

March

April





# Thank you for your time this evening!

Your input is very important to us.

Talk to us.

Also, please take advantage of the feedback forms and the comment board, our web site or send us an e-mail.



[parkscanada.gc.ca](http://parkscanada.gc.ca)

Bringing you Canada's natural and historic treasures

