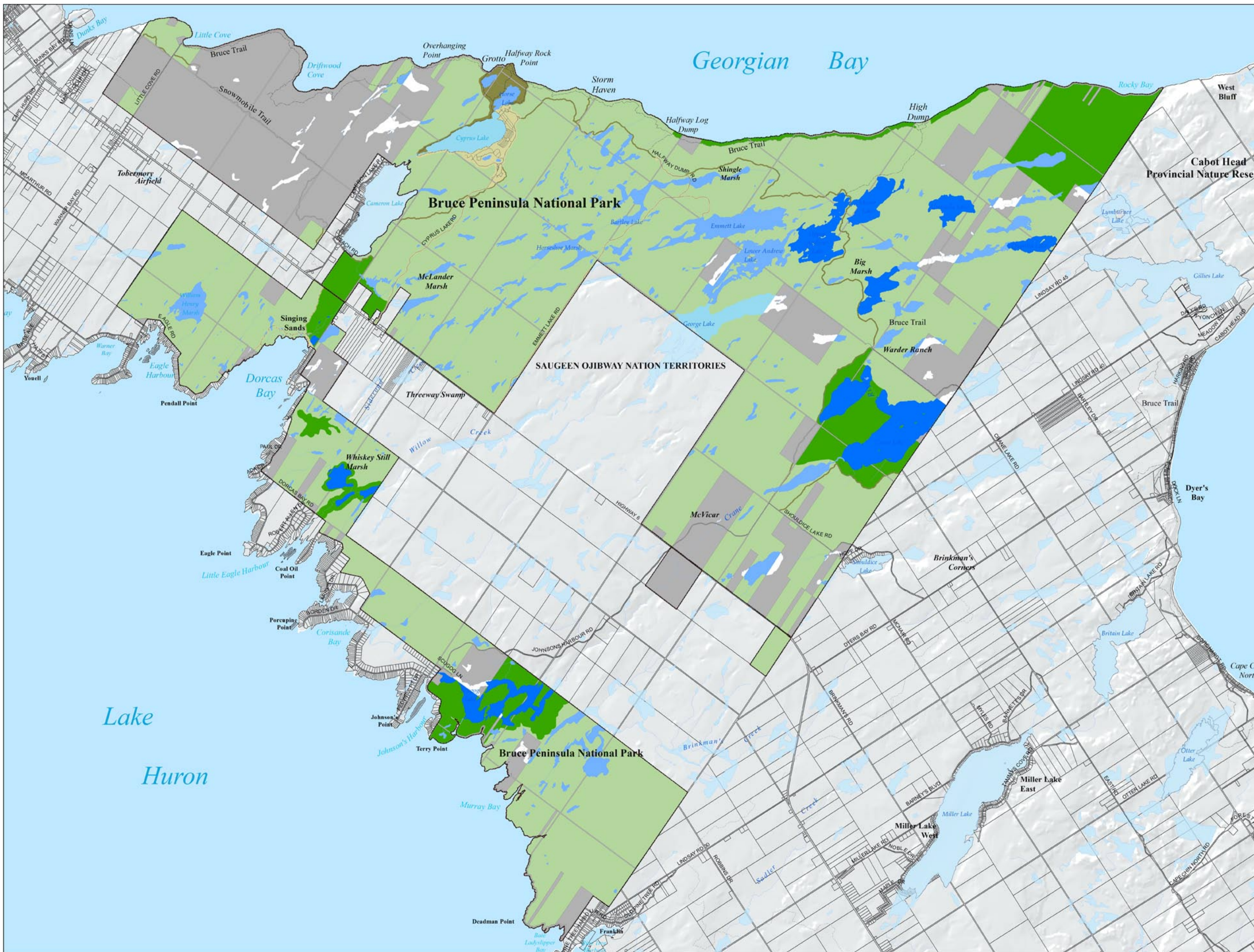


Bruce Peninsula National Park - Draft Zoning Concept Map



Legend

By Zone Type:

Terrestrial Zoning:

- Zone 1 - Special Preservation
- Zone 2 - Wilderness
- Zone 3 - Natural Environment
- Zone 4 - Outdoor Recreation
- No Zoning

Aquatic Zoning:

- Zone 1 - Special Preservation
- Zone 2 - Wilderness
- Zone 3 - Natural Environment
- No Zoning

Reference:

Example zoning has been developed as a proof-of-concept and is intended for discussion purposes only.

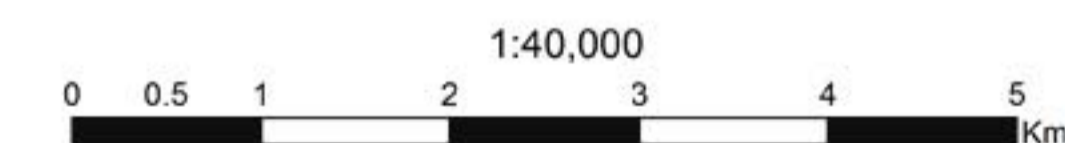
Initial zones were identified in part based on the outcomes of the Resource Value map produced for BPNP, and expert opinion.

Zone boundaries were defined by using linear features on the ground (e.g. transportation corridors) where possible; in other instances property boundaries or subwatershed boundaries were used.

Zoning was not considered on private lands or unopened municipal road / shoreline allowances.

Map produced by: Parks Canada Agency
Map production date: September, 2011

NAD_1983_UTM_Zone_17N
Projection: Transverse_Mercator
Linear Unit: Meter
Datum: North_American_1983



© 2011. Her Majesty the Queen in Right of Canada.
© 2011. Includes Material Of The Queen's Printer For Ontario.
All Rights Reserved.
© 2011. Parcel mapping for lands outside Bruce Peninsula National Park obtained from County of Bruce and used with permission.